

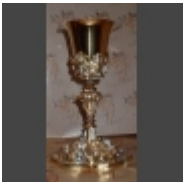
Arte Sacra

Arte Sacra di Paolo Florio

calici, pissidi, patene _



calici, pissidi, patene



Calice bicolore coppa ARG 800%

[\[Dettagli...\]](#)



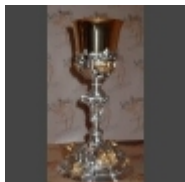
Calice COPPA ARG 925

[\[Dettagli...\]](#)



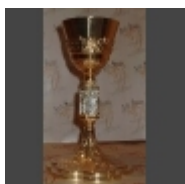
Calice bicolore cesellato a mano con coppa ARG925

[\[Dettagli...\]](#)



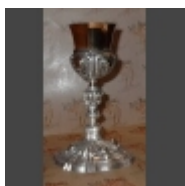
Calice bicolore con coppa ARG 800/1000

[\[Dettagli...\]](#)



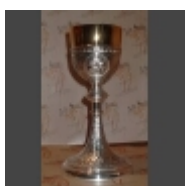
Calice bicolore coppa in ARG 800/1000 cesellato a mano

[\[Dettagli...\]](#)



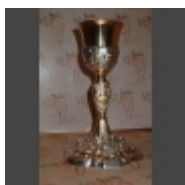
Calice bicolore tutto in ARG 925/1000

[\[Dettagli...\]](#)



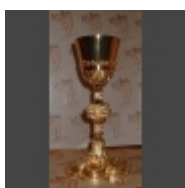
Calice cesellato a mano con coppa ARG 925%

[\[Dettagli...\]](#)



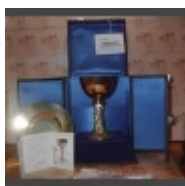
Calice coppa ARGENTO 800%

[\[Dettagli...\]](#)



Calice coppa e medaglioni in ARG 925% cesellato a mano

[\[Dettagli...\]](#)



Calice e Patena EDIZIONE LIMITATA

[\[Dettagli...\]](#)



Ciborio bicolore tutto ARG 925/1000

[\[Dettagli...\]](#)



Patena ARG800/1000

[\[Dettagli...\]](#)



Pisside bicolore in ARG 925/100

[\[Dettagli...\]](#)



Teca ad orologio ARG800

[\[Dettagli...\]](#)



Teca in ottone pesante disegno crocifisso

[\[Dettagli...\]](#)



Teca pesci ARG 800/1000

[\[Dettagli...\]](#)

-
-
-
-
-

«« Inizio

« Prec

1

Succ »

Fine »»

Risultati 1 - 16 di 16